

Wrexham Allotment Strategy



Summary

The profile of allotments is going through a period of change. Allotments are throwing off their old fashioned image and people are rediscovering the enjoyment to be found from growing their own flowers and vegetables and consequently the demand for allotment plots has begun to increase. How big this demand for new allotment sites will be, is difficult to predict, but if there is a demonstrable need, then this needs to be funded through new sources of funding, such as Section 106 money, related to new housing development and then possibly managed through self financing groups.

The Wrexham Allotment Strategy seeks to encourage as wide a section of the community as possible to use the allotments, through making allotment plots smaller, working in partnership with Wrexham Allotment and Leisure Gardeners Association to mentor and support new tenants and continuing to invest and improve the basic facilities.

The strong partnership with Wrexham Allotment and Leisure Gardeners Association will continue, encouraging allotment holders to become involved in the care and management of their sites, possibly setting up their own neighbourhood watch schemes and holding regular liaison meetings with them.

We will work to ensure the management of the allotment service is efficient and effective, onsite information is updated and improved and the website information maintained and improved.

Work will continue in partnership with the Wrexham Allotment and Leisure Gardeners Association to encourage a sustainable approach to allotment gardening, through the reduction in the use of pesticides and the encouragement in the use of water butts for watering, where practical.

The use of external funding will be needed for future improvements above the basic maintenance of the sites, again through partnership working with Wrexham Allotment and Leisure Gardeners Association.

Contents

- 1.0 Introduction- page 4
- 2.0 Background—page 5
- 3.0 Policy Context- page 10-12
- 4.0 Summary of the Responses to the Consultation- page 13
- 5.0 Aims of the Allotment Strategy- page 14
- 6.0 Statement of Action- page 14
- 7.0- 12.0 Action Plan- page 15-34
- 13.0 Monitoring and Evaluation- page 34

1.0 Introduction

Allotments nationally have undergone something of a renaissance over the last few years, as people have realised how useful allotments are to support active living and healthier lifestyles and how much fun can be obtained from growing your own fruit and vegetables.

The use of allotments performs many roles and meets many needs, from getting people outdoors, carrying out physical exercise, to the pleasure of eating your own home grown food, just socialising with like minded people or actively competing in gardening competitions to demonstrate gardening skills.



The purpose of this Allotment Strategy is to clearly set out for the first time, how Wrexham County Borough Council will manage the allotments with the support of Wrexham Allotment and Leisure Gardeners Association and how the service to users can be maintained and improved. It is important to attract new allotment holders, to ensure, allotments remain popular and to try and encourage as wide a cross section of the local community to use them as possible.

It is also important that we encourage people of all ages, abilities and ethnic origins to become allotment holders and enjoy the benefits that working allotments can bring.

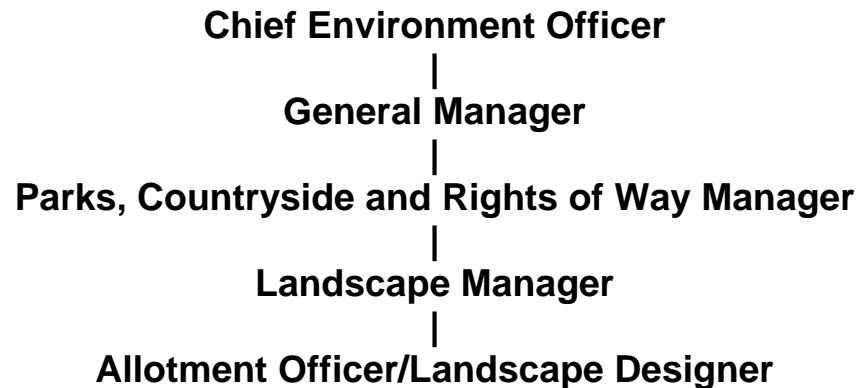
We will encourage and support the Wrexham Allotment and Leisure Gardeners Association and their members to take an active role in the management and care of the allotments.

2. 0 Background

2.1 Management of the Allotments in Wrexham

Wrexham County Borough has run and managed a number of allotments sites for many years. Allotments are currently managed by the Parks, Countryside and Rights of Way section of the Environment Department of Wrexham County Borough Council. This section manages the Country Parks, Urban Parks, Play Areas, Tree Service, Landscape Design Service and Public Rights of Way Service. The management of allotments is compatible with these service areas and benefits from the knowledge and skills of the staff of the section (landscape design, environmental education, conservation, healthy living). There is an individual Allotment Officer to manage and coordinate the service. The officer attends the Wrexham Allotment and Leisure Gardeners Association meetings and ensures there is communication between the tenants and the Authority.

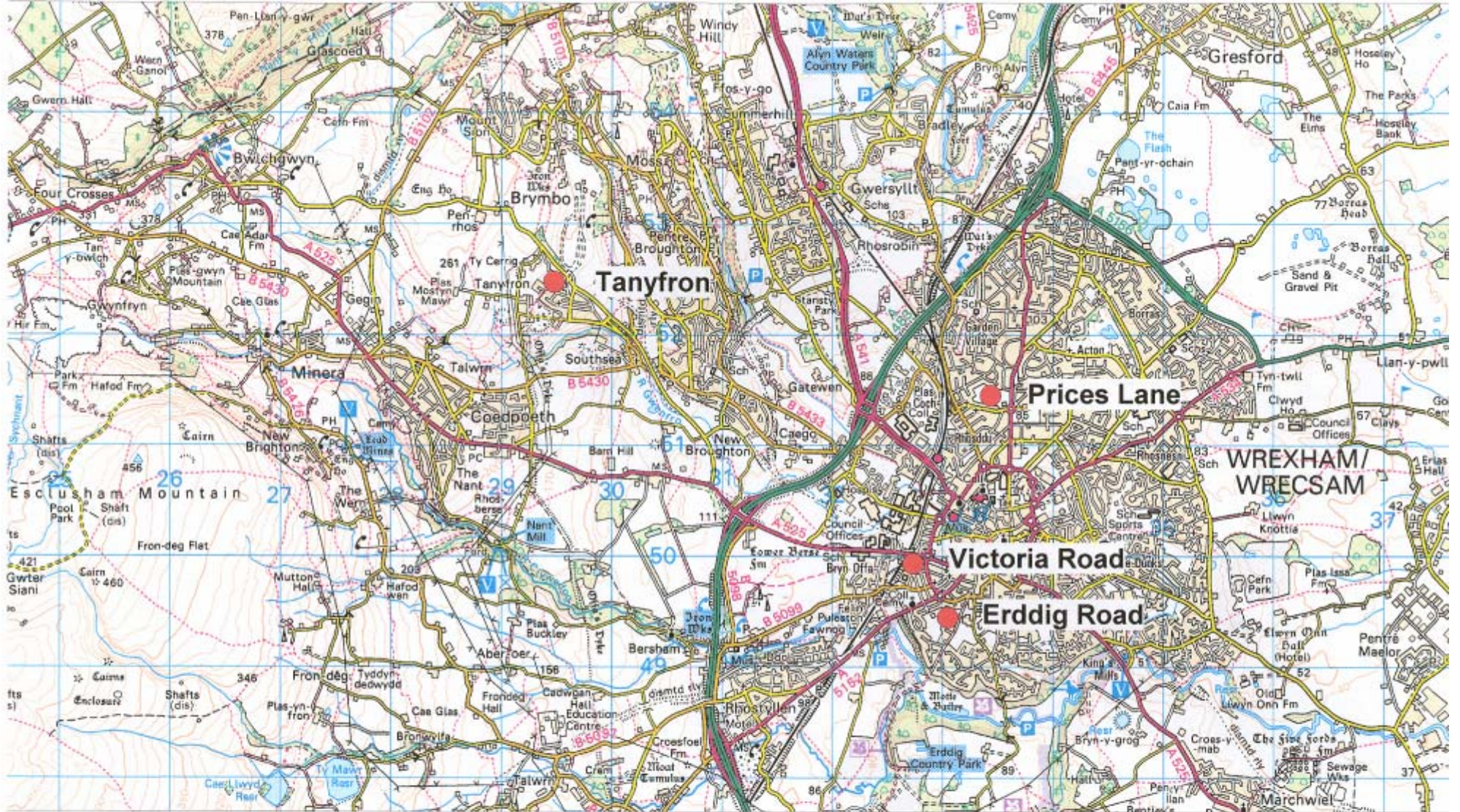
2.2 The current management structure is outlined below.



2.3 There are four sites, at Tan y Fron, Prices Lane, Victoria Road and Erddig. The size of the sites is as follows-

- Prices Lane- 3.65 ha
- Erddig Rd- 2.75 ha
- Victoria Rd- .97 ha
- Tan y Fron – 0.43 ha

Total allotment hectarage = 7.8 ha



Reproduced from the Ordnance Survey mapping with the permission of the Controller of Her Majesty's Stationery Office Crown copyright.
 Unauthorised reproduction infringes Crown copyright and may lead to prosecution or civil proceedings. Wrexham County Borough Council Licence No100023429

Chief Environment Officer

Prices Lane, Erddig Road, Victoria Road and
 Tanyfron Allotments

Wrexham Council Buildings, Wrexham LL13 8BG
 Telephone 01978 297100. Fax 01978 297103

Date : 5/1/2007



2.4 There are in total 295 plots, with 278 tenants. The population of Wrexham County Borough was recorded as 130,200 (based on the 2004 mid-year population estimates). This constitutes 1.74 plots per 1000 population. The national average in England is 15 plots per 1000 household (1997, National Society of Allotment and Leisure Gardeners, Survey). It should be noted, that though Wrexham does not score highly from a point of view of the national average in England, the Wrexham allotments are fully utilised and have a waiting list. This is not the case with some other Authorities that have a high number of allotments, but are not able to let them fully.

2.5 Cost of an Allotment 2007

Allotment holders are charged £48 for a full plot, £29 for a half plot and £14.50 for a quarter plot. Water rates are charged at £9.27 per annum. The charges are broadly in line with other Local Authorities.



2.6 Condition of the Allotment Sites

There is currently a waiting list for the allotment sites and all the available allotment plots are taken or being prepared for use. The sites are generally in good condition, with all sites fenced and secured, with water supplies and a non compostable rubbish area, for each site (where rubbish is collected and removed off site). The majority of the roads are in a reasonable condition. Further investment is needed in some of the roads network, particularly at Price's Lane.

2.7 Legislative Framework

There is a statutory duty for Local Authorities to provide allotments for their residents (Small Holdings and Allotments Act 1908). The law guiding the provision of allotments is set out in statutes that were passed in the period from 1908 to 1950. Legislation related to the provision of allotments includes the following Acts –

- Small Holdings and Allotments Act 1908
- Land Settlement (facilities) Act 1919
- Allotment Act 1922
- Allotment Act 1925
- Small Holding and Allotment Act 1926
- Agricultural Land (Utilisation) Act 1931
- Allotment Act 1950
- Local Government Act 1972
- Town and Country Planning act 1990



2.8 It should be noted, The Allotment Act 1922 gives protection to land acquired specifically for use as allotments, (statutory allotment sites). Land that has been acquired for other purposes and which has been used for allotments in the interim (temporary allotment sites), is not protected in the same way. The Wrexham allotments have been managed and used as allotments for many years and thus must be considered as statutory allotment sites, with all the protections in law this gives the sites.

3.0 Policy Context

3.1 Wrexham Community Strategy

The Welsh Assembly Government has imposed a statutory responsibility on Local Authorities in Wales to develop and implement a Community Strategy. This strategy, known as “Wrexham Refreshed, Wrexham Community Vision 2004 – 2020”, aims to promote the economic, social and environmental well-being of people in Wrexham County Borough and contribute to sustainable development over the next fifteen years. Key objectives that relate to the Allotment Strategy include –

- To build social and physical environments that create the necessary conditions to protect, promote and support the health and well being.
- To increase the availability of safe leisure and cultural activities and more opportunities for play and creativity.
- To encourage people to respect and enjoy their local environment and it’s biodiversity.
- To ensure the natural environment supports the largest possible range of native animals and plants and is supported by sustainable agricultural and forestry land use.



3.2 Health, Social Care and Wellbeing Strategy for Wrexham

The strategy’s vision is to create a healthier community by promoting and supporting healthier lifestyles, and to develop first class services that support those people who have health or care needs. The strategy sets out a clear indication of how Wrexham County Borough Council and Wrexham Local Health Board working with their partners, aim to improve the health, social care and well-being of the population of Wrexham over the next three years. Encouraging people to take up allotments and in the process eat healthier food and take more exercise supports the aims of the above strategy of getting people fitter.

3.3 Wrexham Unitary Plan and the Local Development Plan

The Wrexham Unitary Development Plan was formally adopted in February 2005 and covers the period 1996-2011. It provides a framework for local decision making and the reconciliation of development and conservation interests in order that land use changes proceed coherently and with maximum community benefit.

The following policy within the Unitary Development Plan is directly related to allotments-

Policy CLF 4 The redevelopment of sports grounds, playing fields, children's play areas and informal open spaces and allotment gardens for uses other than sport and recreation will not be permitted unless:-

- a)** redevelopment of only a small part of the site would allow the retention and enhancement of that existing facility; or
- b)** the long term requirement for the facility has ceased and it would not lead to, or increase an existing shortfall of that facility in the immediate locality; or
- c)** the loss can be replaced with an equivalent or greater provision in the immediate locality. Alternative sites should be within settlement limits or, in exceptional circumstances, adjacent to settlement limits provided that associated buildings, lighting, and parking facilities are not intrusive in the landscape and user accessibility is not reduced.

3.4 Climbing Higher (Welsh Assembly Strategy For Sport And Physical Activity)

Climbing Higher is a key document with stretching targets for the health of people living in Wales. The strategy focuses on improving the health of the nation through improving physical access to green space and sporting facilities and encouraging children and adults to take more exercise. Allotments can help in getting people fitter and more active. The targets below are relevant to the Allotment Strategy -

- Target 1- Adults participating in 5x30 minutes of moderate physical exercise per week, with a target of one percentage point per annum increase in overall adult physical activity levels.
- Target 10 - The percentage of the people of Wales using the natural environment for outdoor activities will increase from 36% to 60%.

3.5 Environment Strategy For Wales (Welsh Assembly Strategy For The Environment)

The Environment Strategy for Wales, sets out important principles and outcomes expected from us all, in particular –

- Individuals understand and are enabled to take responsibility for their environmental impact; changes are apparent in behaviour. Indicators for this outcome include percentage of people taking actions to improve the environment and trends in the number of people taking part in environmental volunteering.

Allotments have a role in encouraging people to behave more environmentally responsibly through growing their own vegetables and flowers and helping encourage children to get involved and learn about allotments.

4.0 Summary of the Responses to the Consultation

A postal survey of the Wrexham Allotment holders was carried out to support the work of developing a strategy for the allotments during the summer of 2006. All current tenants were asked their views on a range of questions and important information was gained about who was using the allotments.

Out of 204 tenants, we received 120 replies back to our questionnaire, which was a very good response rate (59%). The majority of tenants were retired (53%), over 60 (51%), white (100%) and not considered disabled (80%), though only 17% said they were disabled, leaving a small discrepancy between the results for disabled and not disabled (3% didn't indicate their status).



The majority of people have worked their allotment plot for over 2 years (75%) and involve their family in the care of the plot (75%).

People travel to the allotment sites mainly by car (72%), probably due to need to take tools etc with them. An encouraging number of people cultivate organically their plot (78%) and compost their waste on their plot (83%).

The allotments are used to grow mainly vegetables (100%), fruit (83%) and flowers (60%).

The main reasons why people keep an allotment are to provide fresh home grown produce (99%), to keep fit and healthy (90%) and for relaxation (80%).

The general picture to emerge from the tenants survey is the majority of tenants are retired or close to retirement, white and male (68%). They do receive quite a bit of help from their family and friends (75%), which may diversify the general users of the allotment and the age profile. More recently, there is some suggestion that there are more females taking on allotment plots.

5.0 Aims of the Allotment Strategy

- **Effective Management**- ensuring the allotment sites are properly managed and maintained.
- **Access for All** – working to improve the accessibility of the allotments for all sections of the community.
- **Promotion and Responsibility** – promoting the use of allotments and publicising information about the allotments.
- **Sustainability** – encouraging a sustainable approach to the care and management of the allotments.
- **Funding** - ensuring that there are adequate funds to maintain and improve the sites.
- **Future Demand**- providing enough allotments for the local community's needs.

6.0 Statement of Action

The core of the Wrexham Allotment Strategy is a Statement of Action, which sets out the work the Authority, with its partners, proposes to undertake to secure a well managed network of allotment sites in Wrexham. Proposed activities are presented under a series of aims, with an indication of costs, timescales and who needs to be involved. Each statement of action is supported by a section on the issues related to the aim, consultation feedback and a section on current work. This is followed by a statement of intent and the actions, targets and milestones for the project to be delivered. It is the intention to produce an Annual Action Plan, which will take the actions and targets of the Statement of Action and provide an annual work plan to ensure the plan is delivered each year. This will be available to the Wrexham Allotment and Leisure Gardeners Association and tenants (and members of the public if they request it).

7.0 Aim- Effective Management- ensuring the allotment sites are properly managed and maintained.

7.1 Issue

Security of the sites remains an issue for tenants, with break-ins and loss of property from tenants huts and the stealing of their produce. These incidents tend to occur in the evening and night and can perhaps be broken down into anti- social behaviour and theft. Anti- social behaviour occurs, where young people get into the allotments, drink alcohol, then cause damage to property and or intimidate allotment holders. The other problem is theft of items from the sheds, this has involved removal of sections of fencing and the stealing of large items of equipment, usually in the night.



Another issue appears to be some tenants not maintaining their plots to the standard expected of them, leading to complaints about invasive weeds. Toilets or lack of them is an issue for some tenants, however, toilets has been considered by the Wrexham Allotment and Leisure Gardeners Association and was discounted due to cleaning and vandalism issues. Closeness to the water supply is also an issue for some tenants.

7.2 Consultation

When asked to rank how important various site issues were to them, security (85%), closeness to water supply (69%), general repairs and maintenance of the site (51%) and finally the cost of renting the allotment (50%), were the most important issues for the tenants. When asked about theft or vandalism over the last 5 years, 47% had suffered problems, 41% hadn't. The remainder didn't answer.

Issues of much lower importance were the provision of disabled facilities (20%), the provision of toilets (31%) and involvement in the management of the allotment site (30%).

Uncontrollable invasive weed growth seemed to be the biggest issue when tenants were questioned over plot management problems (41%), otherwise poor drainage, rats and rabbits didn't seem to be areas of major concern.

7.3 Current work

The management of the administrative system for the allotments is run through an IT system. Management of the allotments is carried out in close coordination with the Wrexham Allotment and Leisure Gardeners Association and regular site meetings are undertaken to resolve onsite issues and problems with allotment holders. Tenancy agreements are sent out to all allotment holders each year. New tenants are offered a service to make the management of their new plot easier through rotivation of the ground (if access is acceptable for the tractor).

When there are problems over security, the Police are informed, allotment holders are responsible for insuring their own equipment on site. Fencing and access to the site is the responsibility of Wrexham County Borough. All the allotment sites are currently adequately fenced and secured.

The lack of toilets has been discussed at the Wrexham Allotment and Leisure Gardeners Association meeting where there was an unwillingness to maintain and care for them, if external funding was secured to provide them. It is very unlikely that WCBC would be able to fund and maintain conventional toilets onsite. It should be noted, some Allotment Associations have installed much more eco friendly and cheaper compost toilets onsite. They have then managed and cleaned them.

7.4 Statement of Intent - Effective Management- we will continue to work to ensure the allotment sites are properly managed, the tenants are actively involved and consulted with.

Action	Target	Partnership	Milestone	Cost	Funding
--------	--------	-------------	-----------	------	---------

7.4 Statement of Intent - Effective Management- we will continue to work to ensure the allotment sites are properly managed, the tenants are actively involved and consulted with.

Action	Target	Partnership	Milestone	Cost	Funding
7.4.1 Determine demand for setting up allotment watch scheme to reduce security problems onsite.	Pilot an Allotment watch scheme and evaluate success.	Lead – WCBC. Wrexham Allotment and Leisure Gardeners Association, Police.	2008. Evaluate success of scheme to consider need to extend pilot.	WBCB staff time	WCBC revenue funding
7.4.2 Ensure all the allotment sites are securely fenced, locked and gated.	Repair any damaged perimeter fencing, as soon as practical and ensure all gates are secure and locked.	Lead – WCBC	Review security annually.	WBCB staff time	WCBC revenue funding
7.4.3 Hold regular liaison meetings with tenants to ensure effective	Quarterly meetings held between WCBC and the Wrexham Allotment and Leisure Gardeners	Lead – WCBC. Wrexham Allotment and Leisure Gardeners Association.	Review effectiveness of meetings annually.	WBCB staff time	WCBC revenue funding

7.4 Statement of Intent - Effective Management- we will continue to work to ensure the allotment sites are properly managed, the tenants are actively involved and consulted with.

Action	Target	Partnership	Milestone	Cost	Funding
communication and discuss areas of improvement.	Association.				
7.4.4 WCBC will ensure service to tenants is effective and efficient	1. Tenancy agreements sent out annually. 2. Allotment holders requests responded to within 7 days. 3. Sites maintained in good condition, with regular maintenance and weed control and rubbish removed from onsite collecting areas.	Lead – WCBC.	Undertake customer satisfaction survey 2008.	WBCB staff time	WCBC revenue funding
7.4.5 New tenants will be	1. New allotment holders offered	Lead – WCBC. Wrexham Allotment	2009- survey number of new	WBCB staff time	WCBC revenue funding

7.4 Statement of Intent - Effective Management- we will continue to work to ensure the allotment sites are properly managed, the tenants are actively involved and consulted with.

Action	Target	Partnership	Milestone	Cost	Funding
supported and encouraged.	mentor by Wrexham Allotment and Leisure Gardeners Association. 2. New tenants offered support, such as rotation of plot (where accessible) by WCBC.	and Leisure Gardeners Association.	tenants taking up new plots to determine what drop out rate is in first 2 years.		
7.4.6 Improve onsite information	All onsite information at the entrances to the allotments will be reviewed and replaced where necessary.	Lead – WCBC. Wrexham Allotment and Leisure Gardeners Association .	All sites have upto date information on the entrances by 2009.	£1500 per year	WCBC revenue funding
7.4.7 Determine demand for toilets onsite, if tenants want the facility,	No specific target as work depends on allotment holders demand.	Lead – Wrexham Allotment and Leisure Gardeners Association.	No milestone set.	Not identified	Lottery/Shell Better Britain/Esme Fairburn Foundation

7.4 Statement of Intent - Effective Management- we will continue to work to ensure the allotment sites are properly managed, the tenants are actively involved and consulted with.

Action	Target	Partnership	Milestone	Cost	Funding
provide guidance and support for their fund raising efforts on the understanding they would maintain them afterwards.					

8.0 Aim - Access for All – working to improve the accessibility of the allotments for all sections of the community.

8.1 Issue

Accessibility of the Allotment sites and the individual plots is important to all users, as they need to manure and harvest the crops onsite. For people with a disability, an easily accessible plot with access to water is important and maybe instrumental in helping them to consider whether they are able to manage a plot.

8.2 Consultation

Approximately 17% of the current tenants indicated they were disabled. The survey work was undertaken with existing users, so gives no indication of what the demand for people with disabilities to take up a plot would be.

8.3 Current Work

The Wrexham Allotment and Leisure Gardeners Association have worked with the local Primary and High School to create small beds to encourage the local children to become involved in growing and caring for vegetables. The British Trust For Conservation Volunteers manage a plot through the green gym programme for volunteers, some of their volunteers have physical and mental disabilities. There is one dedicated plot at Prices Lane for people with disabilities, paid for through the Wrexham Allotment and Leisure Gardeners Association.

8.4 Statement of Intent – Access For All. We will work to make the provision of allotments as accessible to as many sections of the local community as possible.

Action	Target	Partnership	Milestone	Cost	Funding
8.4.1 Create smaller plots (in accessible locations) to encourage	Ensure each allotment site has a number of small, easily accessible plots available to	Lead – WCBC. Wrexham Allotment and Leisure Gardeners Association .	2009- check on uptake of smaller plots. If uptake exceeds demand, reduce sizes of	WBCB staff time	WCBC revenue funding

8.4 Statement of Intent – Access For All. We will work to make the provision of allotments as accessible to as many sections of the local community as possible.

Action	Target	Partnership	Milestone	Cost	Funding
people with disabilities and potential new tenants not wanting a large commitment.	new allotment holders.		older plots as they become available.		
8.4.2 Work with people with disabilities and their representative organisations to identify barriers to them taking up an allotment.	Work in partnership with the Wrexham Allotment and Leisure Gardeners Association to help disabled people gain access to the allotments, whether this is for physical or mental disabilities.	Lead – Wrexham Allotment and Leisure Gardeners Association. WCBC.	2009- check on uptake by people with disabilities of allotments. Review actions if unsuccessful.	WBCB staff time Specific items not costed.	WCBC revenue funding. Lottery/Shell Better Britain/Esme Fairburn Foundation
8.4.3 Allotment holders will only be entitled hold one plot to ensure the	As allotment holders holding multiple plots relinquish the plots, these will be converted to smaller	Lead – WCBC. Wrexham Allotment and Leisure Gardeners Association.	2009 review progress.	WBCB staff time	WCBC revenue funding

8.4 Statement of Intent – Access For All. We will work to make the provision of allotments as accessible to as many sections of the local community as possible.

Action	Target	Partnership	Milestone	Cost	Funding
maximum number of allotments are available.	plots.				

9.0 Aim - Promotion and Responsibility – promoting the use of allotments and publicising information about the allotments.

9.1 Issue

To encourage more allotment holders from all sections of the community it is important that the local community’s awareness of the allotment sites is improved. This can be through press coverage, promotion to schools and school children, updated Wrexham County Borough Council website information and more specific targeted promotion. It is also important that allotment holders are aware of their responsibilities and respect each others plots and the rules of the site.

9.2 Consultation

Targeted consultation and promotion with people with disabilities and ethnic minorities would help to raise awareness in groups that haven’t traditionally used allotments.

9.3 Current Work

Promotion of the allotments has been confined to the Wrexham County Borough Council website and specific press coverage. There is some suggestion that as there is a waiting list, there is no need to promote allotments, but to maintain the popularity of allotments and ensure they are well used and supported, it is important to continually promote and develop awareness of the allotments, for a new generations of users.

9.4 Statement of Intent – - Promotion and Responsibility. We will promote the use of the allotments and publicise information to make tenants aware of their responsibilities.

Action	Target	Partnership	Milestone	Cost	Funding
9.4.1 Encouraging	Promote the allotments to	Lead – Wrexham Allotment	2009- check on uptake by people	WBCB staff time	WCBC revenue funding

9.4 Statement of Intent – - Promotion and Responsibility. We will promote the use of the allotments and publicise information to make tenants aware of their responsibilities.

Action	Target	Partnership	Milestone	Cost	Funding
new allotment holders from all sections of the community.	encourage new allotment holders, through posters, press publicity, contacts with schools, website information and targeted publicity to people with disabilities and ethnic minorities.	and Leisure Gardeners Association. WCBC.	with disabilities/ethnic minorities/younger people of allotments.		
9.4.2 Publicising vacant plots.	Encourage new allotment holders through onsite publicity detailing which allotment plots are vacant.	Lead – WCBC Wrexham Allotment and Leisure Gardeners Association.	All sites will publicise vacant plots available with contact details by 2008.	WBCB staff time- plus printing costs- £200- £300 per year.	WCBC revenue funding- £300 per year
9.4.3 Making	Ensure all tenants of	Lead – WCBC	All sites will have	WBCB	WCBC revenue

9.4 Statement of Intent – - Promotion and Responsibility. We will promote the use of the allotments and publicise information to make tenants aware of their responsibilities.

Action	Target	Partnership	Milestone	Cost	Funding
allotment holders aware of their responsibilities.	allotments are aware of their responsibilities, through the tenancy agreements. Site rules will clearly be displayed at each allotment.	Wrexham Allotment and Leisure Gardeners Association.	rules displayed and each tenant will have an annual tenancy agreement.	staff time	funding.

10.0 Aim -Sustainability – encouraging a sustainable approach to the care and management of the allotments.

10.1 Issue

Wrexham County Borough Council is committed to reducing the amount of waste taken to landfill and is keen to encourage residents to think about how to recycle more of their waste. Encouraging allotment holders to recycle their garden waste onsite, through composting is an important contribution to this process. Using less pesticides is better for the health of the allotment holders and better for the local environment and wildlife.

10.2 Consultation

Approximately 78% of tenants indicated they farmed organically, which is very impressive and 82% of them composted their waste onsite.

10.3 Current Work

There is currently a collection facility for none green waste to remove it off site (such as woody materials and other none compostable items). It should be possible to encourage more tenants to compost green waste onsite, through working with the Allotment Tenants Association on promoting the benefits of using your own compost.

10.4 Statement of Intent – Sustainability. We will work with the tenants to take a sustainable approach to the management and care of the allotments.

Action	Target	Partnership	Milestone	Cost	Funding
10.4.1 Encourage tenants to adopt a sustainable	85% of tenants working their plots organically by 2009.	Lead – WCBC Wrexham Allotment and Leisure Gardeners	Check progress 2009, through survey.	WBCB staff time	WCBC revenue funding

10.4 Statement of Intent – Sustainability. We will work with the tenants to take a sustainable approach to the management and care of the allotments.

Action	Target	Partnership	Milestone	Cost	Funding
approach to the care of their allotments.	All allotment holders encouraged to compost their green waste onsite. Encourage allotment holders to use rainwater butts to collect water	Association.			
10.4.2 Improve the existing wildlife habitats on the allotments, through sympathetic management.	Ensure ponds/wet areas and areas of wildlife interest are managed properly for wildlife.	Lead – WCBC BTCV/Green Gym	Check progress	WBCB staff time	WCBC revenue funding
10.4.3 Assess interest in Welsh College of Horticulture	If sufficient interest, run course through the Welsh College of Horticulture for	Lead- WCBC Welsh College of Horticulture, Allotment Tenants	2008- assess interest in further training opportunities to	WBCB staff time. Cost to	WCBC revenue funding

10.4 Statement of Intent – Sustainability. We will work with the tenants to take a sustainable approach to the management and care of the allotments.

Action	Target	Partnership	Milestone	Cost	Funding
running training courses on good gardening practice/organic gardening.	allotment holders.	Association.	develop environmental awareness in allotment holders.	be met by trainees.	

11.0 Aim - Funding - ensuring that there are adequate funds to maintain and improve the sites.

11.1 Issue

Funding for the management of the allotment sites is just about adequate to maintain the fences, paths and roads in a reasonable condition. Work is needed to improve the onsite information, but this can be phased over a number of years. There is not funding available for major areas of work such as the provision of toilets or a CCTV system, if they were wanted by the allotment holders. External funding would need to be applied for in partnership with the Wrexham Allotment and Leisure Gardeners Association for areas outside the normal revenue funding.

11.2 Consultation

The consultation with the allotment holders brought out sometimes conflicting desires regarding funding opportunities, and larger areas of expenditure. There would need to be agreement and full support to pursue funding applications in the future.

11.3 Current work

There are currently no external funding bids for improvement to the allotments at present.

11.4 Statement of Intent –.Funding. We will continue to work with the Wrexham Allotment and Leisure Gardeners Association to secure funding for improvements in the service

Action	Target	Partnership	Milestone	Cost	Funding
11.4.1 Ensure the current revenue budget is maintained	Maintain current revenue budget for the allotments.	Lead – WCBC Wrexham Allotment and Leisure Gardeners	Review budget-2009.	WBCB staff time	WCBC revenue funding

11.4 Statement of Intent – Funding. We will continue to work with the Wrexham Allotment and Leisure Gardeners Association to secure funding for improvements in the service

Action	Target	Partnership	Milestone	Cost	Funding
for the management of the allotments through the current charging policy.	Increase prices in line with inflation.	Association.			
11.4.2 Work in partnership with Wrexham Allotment and Leisure Gardeners Association to raise funds for capital investment in the allotments, where needed.	No target set-dependent on project.	Lead – WCBC Wrexham Allotment and Leisure Gardeners Association.	Review progress 2009.	WBCB staff time. Capital costs not identified.	Lottery/Shell Better Britain/Esme Fairburn Foundation

12.0 Aim - Future Demand- providing enough allotments for the local community's needs.

12.1 Issue

There is a current waiting list for allotment plots (which varies from month to month) and this is without any serious attempt to promote the use of allotments to the local community. As part of the proposed improvements to the allotment sites, there will be an increase in the number of smaller plots, which may help reduce the waiting lists, but this may not be sufficient in the longer term.

The allotments are concentrated in the centre of Wrexham (apart from the Tan y Fron site) and it could be argued, this does not serve the wider population of Wrexham and its surrounding villages. There maybe a greater demand for allotments in the future, with the rise in the number of apartments and their lack of gardens.

However, it is very hard to judge what the demand for allotments will be in future years, but if the demand were to increase, then consideration would be needed for new sites, possibly through planning gain and Section 106 agreements with developers of new housing areas, possibly through converting suitable surplus open space, in the ownership of the Authority.

It is suggested that any new sites are self managed and self financing, to reduce any strain on the existing small allotment budget.

12.2 Consultation

No consultation work to date has been undertaken on this issue. It is proposed to undertake a People's Voice consultation during 2007, which may yield some information, regarding future demand for allotments.

12.3 Current Work

Discussions have been held with the Planning Department Officers on the future Local Development Plan and the role of allotments.

12.4 Statement of Intent – We will continue to monitor the demand for new allotments.					
Action	Target	Partnership	Milestone	Cost	Funding
12.4.1 Monitor demand for new allotments and assess need for new sites.	2009-Review demand for allotments after further promotional work.	Lead – WCBC Wrexham Allotment and Leisure Gardeners Association.	Check on progress 2009.	Not identified.	Section 106 agreements/developers
12.4.2 Ensure allotments are considered as part of new Local Development Plan process.	Allotments are considered as part of the greenspace provision in the Local Development Plan.	Lead – WCBC		WBCB staff time. Capital costs not identified.	WCBC revenue funding
12.4.3 If new allotment	Ensure any new facilities are self	Lead – WCBC Wrexham Allotment	Check on progress 2009.	Not quantified.	Initially Section 106 agreements/developers

12.4 Statement of Intent –.We will continue to monitor the demand for new allotments.

Action	Target	Partnership	Milestone	Cost	Funding
sites are set up, they are self managed and self financed.	financed.	and Leisure Gardeners Association.			To set up allotment, followed by self managed allotment association.

13.0 Monitoring and Evaluation

The strategy will be implemented through an annual action plan. Monitoring of progress in implementing the strategy will be achieved, through the milestone targets. Further survey work will be needed to gain awareness of the needs of people with disabilities, younger people and ethnic minorities. It would be useful to carry out a People’s Voice survey on allotments, to gauge the local community’s view on allotments and what the unfulfilled demand is for more allotments.

MH 22.01.07