

Results for council tree strategy questionnaire



As part of the consultation for the new council tree strategy we wanted to get your views about trees in general. More specifically we wanted to know how you think we should manage Wrexham's trees and how or where we should focus our future time and efforts. These results will form part of the strategy.

Thank you to those of you who filled in the questionnaire.

The response received has been extremely encouraging, demonstrating that trees are an important part of life to the people of Wrexham. Those consulted include housing tenants, schools, disability groups, youth groups, people requesting questionnaires through local media and answering our on-line questionnaire.

In total we received 283 responses in 2 months. 183 of these were via our website, the rest coming from the variety of groups and people mentioned above.

We put to you a number of statements and questions giving you a choice of answers. Following this page the statements are listed with the response we received underneath.

Thank you again to those who responded, we hope you are pleased with the results.

We want to retain and encourage suitable areas for wildlife in trees, such as leaving standing dead wood that isn't a safety hazard (dead trees or wood provides a good place for wildlife such as bats, insects and woodpecker).

80% Think that this is important and should be done as much as possible.

12% Think dead trees look unsightly and should be removed.

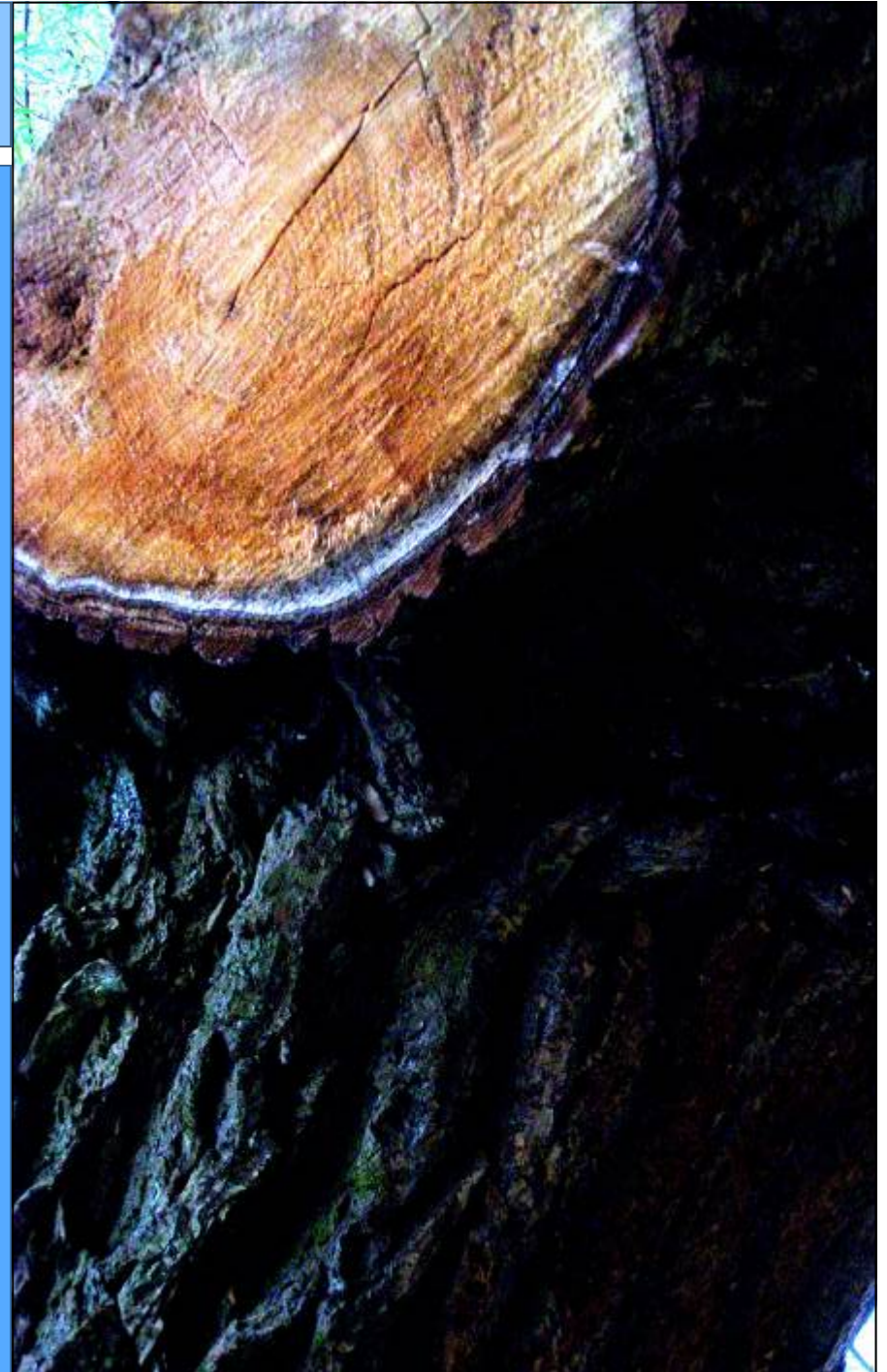
8% Do not mind either way.

Less than 1% think it is unimportant and will not achieve anything.



Plant native trees or trees likely to enhance the wildlife value of the area.

- 90%** Think this is important and a great idea if it will help wildlife.
- 4%** Think this is unimportant, there are probably already enough existing areas for wildlife.
- 2%** Are not sure.
- 2%** Want to know why we need to enhance the wildlife value of an area.
- 1%** Are against this idea completely and say trees should only be planted for beauty and not for wildlife value.
- 1%** Want to know how will this help wildlife.



How much of a contribution do you think trees can make toward making Wrexham a cleaner and more attractive environment?

75% **Trees make a considerable contribution.**

20% **They make some.**

2% **Did not answer.**

2% **Very little contribution.**

1% **No contribution at all.**



We want to use trees to help improve the quality of Wrexham's environment and reduce the impacts of climate change. We asked you which of the following methods you think will contribute the most towards this. We have arranged your responses from most important to the least below:

- 1 Plant trees in built up / urban areas (streets) where there is very little greenery or trees. This will help to absorb harmful emissions, provide shade and provide a cool environment on hot days, it can also add financial value to property.**
- 2 Phase out the use of chemical sprays used for controlling weeds around trees and replace with greener alternatives such as composted bark chippings.**
- 3 Tree planting in public open space (parks, playing fields, small grassed areas) away from built up areas.**
- 4 Phase out the use of non recyclable materials for tree planting and replace them with recyclable, reusable or biodegradable materials which will not go to landfill.**
- 5 Use the highest quality trees and focus our resources on improving tree planting conditions and aftercare of planted trees to improve their chances of establishment.**
- 6 Concentrate resources on finding alternatives to reduce the amount of Carbon dioxide (CO₂) and other harmful emissions our service emits. For example investigate the use of alternative fuels like bio-diesel for officers vehicles, biodegradable chainsaw oil.**



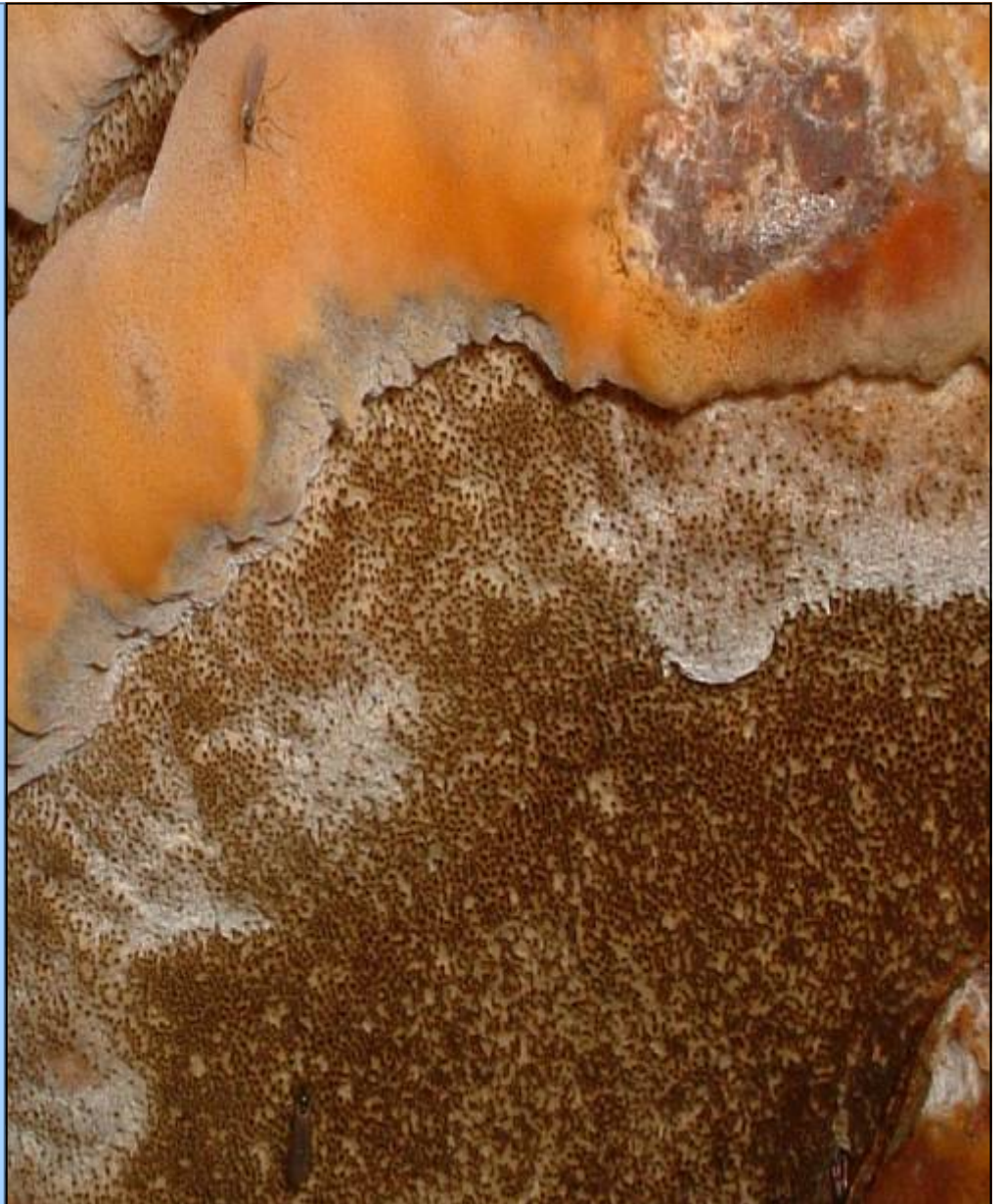
Officers are frequently asked to 'cut back' trees that are said to be causing a nuisance, leaves in gutters, loss of sunlight or overhanging branches.

44% **Want us to prune trees, but only if they are physically touching the property (roofing, walls, fences, sheds etc).**

29% **Think if people have recently moved into a property they should have considered the effects of nearby trees before buying.**

16% **Think we should prune trees wherever the public complain the trees are a nuisance even if they are not touching property or doing any damage.**

11% **Think we should do nothing. The benefits of trees far outweigh the negative impacts trees have on people. If people live next to trees they need to accept that this is all part of living near them.**



What sort of information would you like to receive or know about regarding trees?



From most to least importance:

- 1 Who to contact for general tree enquiries.**
- 2 How to report a dangerous tree.**
- 3 General information about trees. For example, trees and the law or the benefits of trees, educational information.**
- 4 Location of important and historical trees in the County Borough.**
- 5 The main planned programmes of tree maintenance.**
- 6 How to find a qualified and proficient local tree surgeon.**
- 7 Number and location of trees planted in the County Borough.**
- 8 I do not feel I need to know or receive any information.**

How would you like to receive this information?

From most to least importance:

- 1 Web.**
- 2 Press articles.**
- 3 Leaflets.**
- 4 Connect.**
- 5 Local Councillor.**

Other methods. Suggestions include at tenants meetings, via the estate office, on library notice boards, through media, tv and radio, and through public awareness days.

