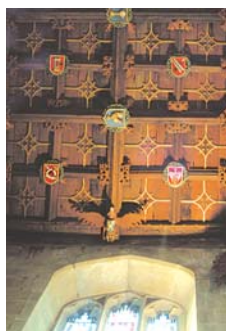




## ALL SAINTS CHURCH

Gresford is often referred to as “one of the finest parish churches in Wales”. The Domesday Book mentions a church in Gresford in the 11th-century. It was almost entirely demolished in the 15th-century, and replaced by the present building, with only the lower parts of the tower and the west wall retained. The reason such a large church was built in a village as small as Gresford, is because thousands of pilgrims came to worship a sacred image, now unknown, whose gifts allowed for the present great church to be completed in 1498.

The screen and stalls with their carvings and misericords date from the 1400s. There are some fine medieval stained glass windows, and an octagonal Perpendicular-style medieval font. The great yew tree by the east gate is ancient, together with the Roman altar carved with the figure of Atropos, believed to date from 350AD, now inside the church.



### FACILITIES:

- Car parking (shared with All Saint's School)
- Toilet facilities (not accessible for wheelchairs at present)
- Loop system for hard of hearing
- Gift shop
- Griffin Inn & Yew Tree Inn (adjacent to Church)

### PLACES TO VISIT:

- Gresford Wells
- Village conservation area
- Local walks available in the guide book
- Good range of local shops & public houses

For access information, please see additional insert in this folder.

### CONTACT:

Tel: 01978 292015

### OPENING TIMES:

May - September:  
Monday - Friday  
10.30am - 4.00pm  
Saturday:  
2.00pm - 4.00pm