
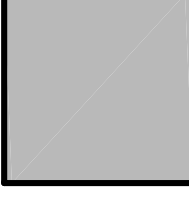
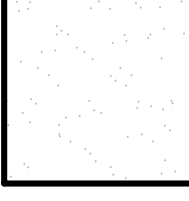
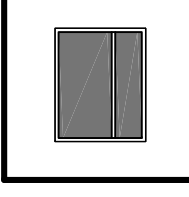
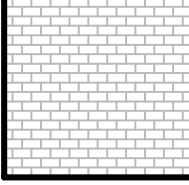
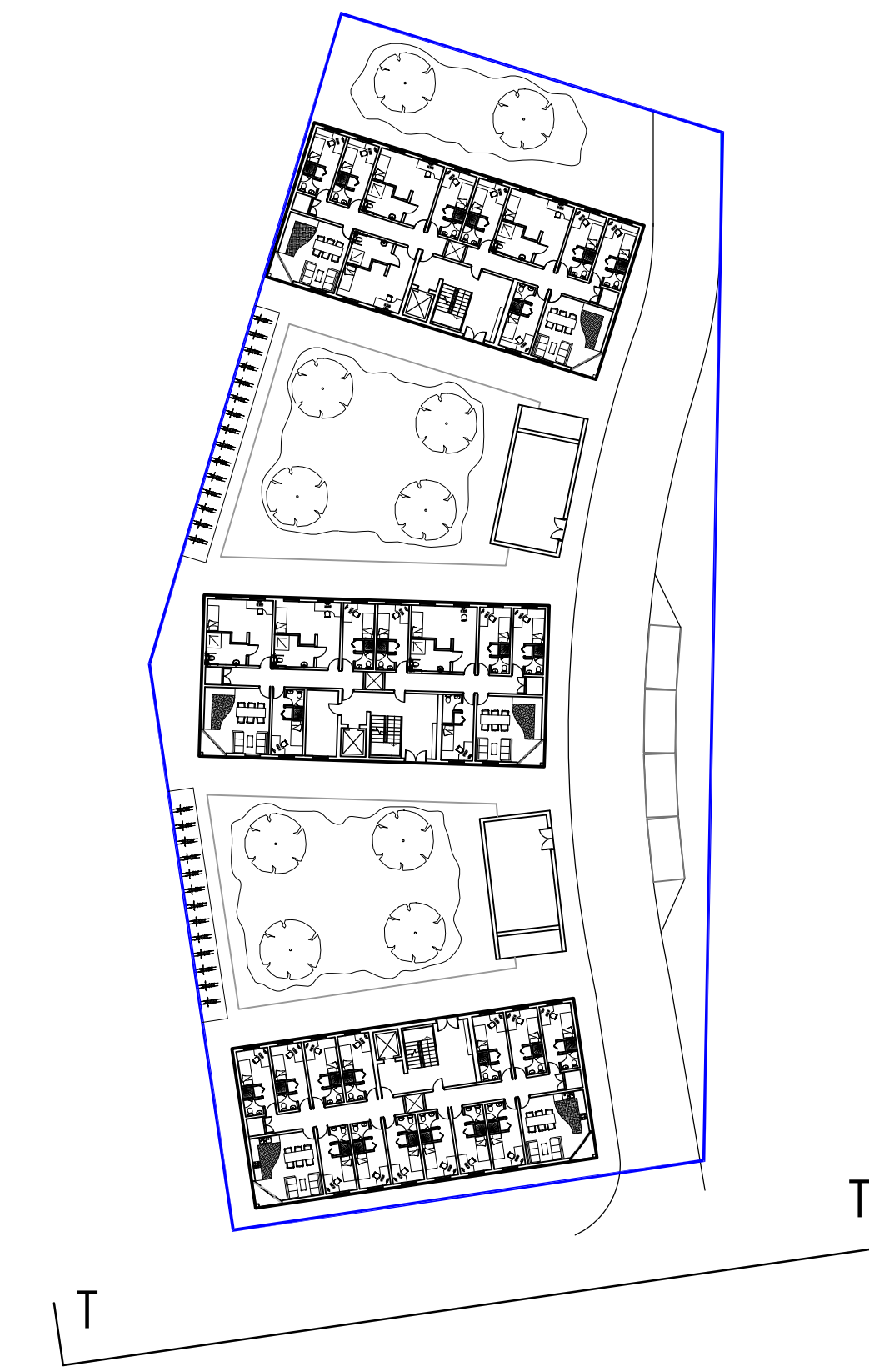


Materials

-  Composite metal panels with factory applied paint finish - light grey eg. RAL 7040
-  Composite metal panels with factory applied paint finish - blue grey eg. RAL 7046
-  Smooth cream render finish to corners at communal spaces
-  Doors and windows with coated metal frames and double glazed units. Frame colour graphite grey eg RAL 7024.
-  Brickwork finish at ground floor level. Cream stock brick with dark recessed mortar.



Proposed context elevation to Crispin Lane T - T (Blocks 1, 2 and 3)

Reserved Matters - Application WRRP/2006/0443

Client:
 MacNiven and Cameron (Wrexham) Ltd, N&G Dickens Limited, and Wrexham Football Club (2006) Ltd.

Project:
 Crispin Lane Redevelopment Adjacent to Wrexham Football Club
 Wrexham
 All Phases

Title:
 Proposed Context Elevations

General Arrangement
 As Proposed

Drawing No: 06110 /AE(2)1 04 * Rev: 01 Date: 05/02/08 Scale: 1:100 @A0

