

Night Support Service

Information for Professionals

To provide a mobile crisis intervention Night Support Service on a short term basis that reacts to temporary changes to individual client needs.

Service Aims

- To provide a Night Support Service to a greater number of people within current resources
- To provide a more flexible and responsive service
- To deliver a crisis intervention emergency service that could prevent hospital admissions
- To provide a back up response to those using assistive technology to maintain independence for longer
- Mid Term Palliative Care

Criteria

- The service is currently free for a maximum of six weeks following hospital discharge
- To provide night support to people using the rehabilitation flat in Springfield
- The service will provide a response to people using the Care Call Services including those people using assistive technology
- The service will provide a crisis response service e.g. a fall
- The service will be reviewed between the fourth and sixth week
- The service will not provide short term planned changes to the care package e.g. respite
- The service will not provide ongoing structured night calls

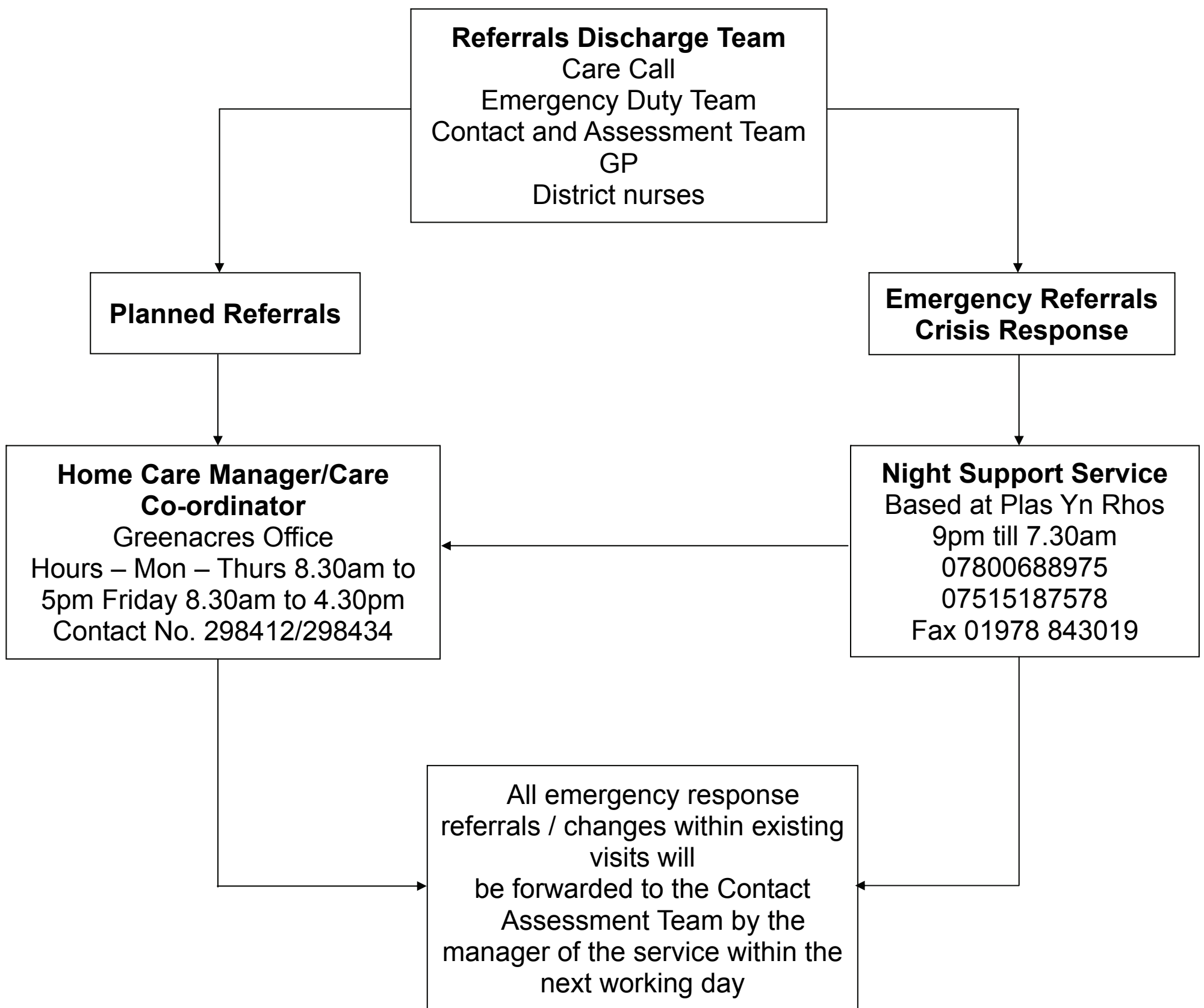
Referrals

Referrals will be received from:

- Discharge Team
- Care Call
- Emergency Duty Team
- Chirk Hospital
- Adult Social Care Management Team
- GP
- District Nurse

**This leaflet is available in other media formats.
For more details please contact Customer Services
Telephone: 0800 5876708**

Routes of referral for Night Support Service



For Further Enquiries Contact

Contact and Assessment Team
1st Floor Crown Buildings
Chester Street
Wrexham
LL13 8BG

Tel: 01978 292066
Fax: 01978 298044
E-mail: socialservices@wrexham.gov.uk