

map 1

PROPOSALS MAP / MAP CYNIGION



Wrexham Unitary Development Plan 1996 - 2011 Cynllun Datblygiad Unedol 1996 - 2011 Wrecsam

Adopted February 2005 / Mabwysiadwyd Chwefror 2005



Notation / Nodiadau

- County Boundary / Ffin y Sir
- Inset / Mewnsoeddiad
- Green Belt / Ffin Gyrdi - EC1
- Special Landscape Area / Ardor Tŷfan Arboreig - EC6
- Biodiversity Conservation / Cadwraeth Bioamrywiaeth - EC6
- Land Reclamation / Adfer Tŷ - EC18
- Development & Flood Risk / Datblygiad a Pherygl LHM - EC12
- Walking/Cycling Route / Llysofr Cerdded/Bacio - T10
- Protection of Mineral Resources / Dogelw Adroeddi Mynerau - MW9
- Minerals Buffer Zone / Cychlybodd Rhagod Mynerau - MW11

List of Insets / Rhestr o Fewnsoeddiadau

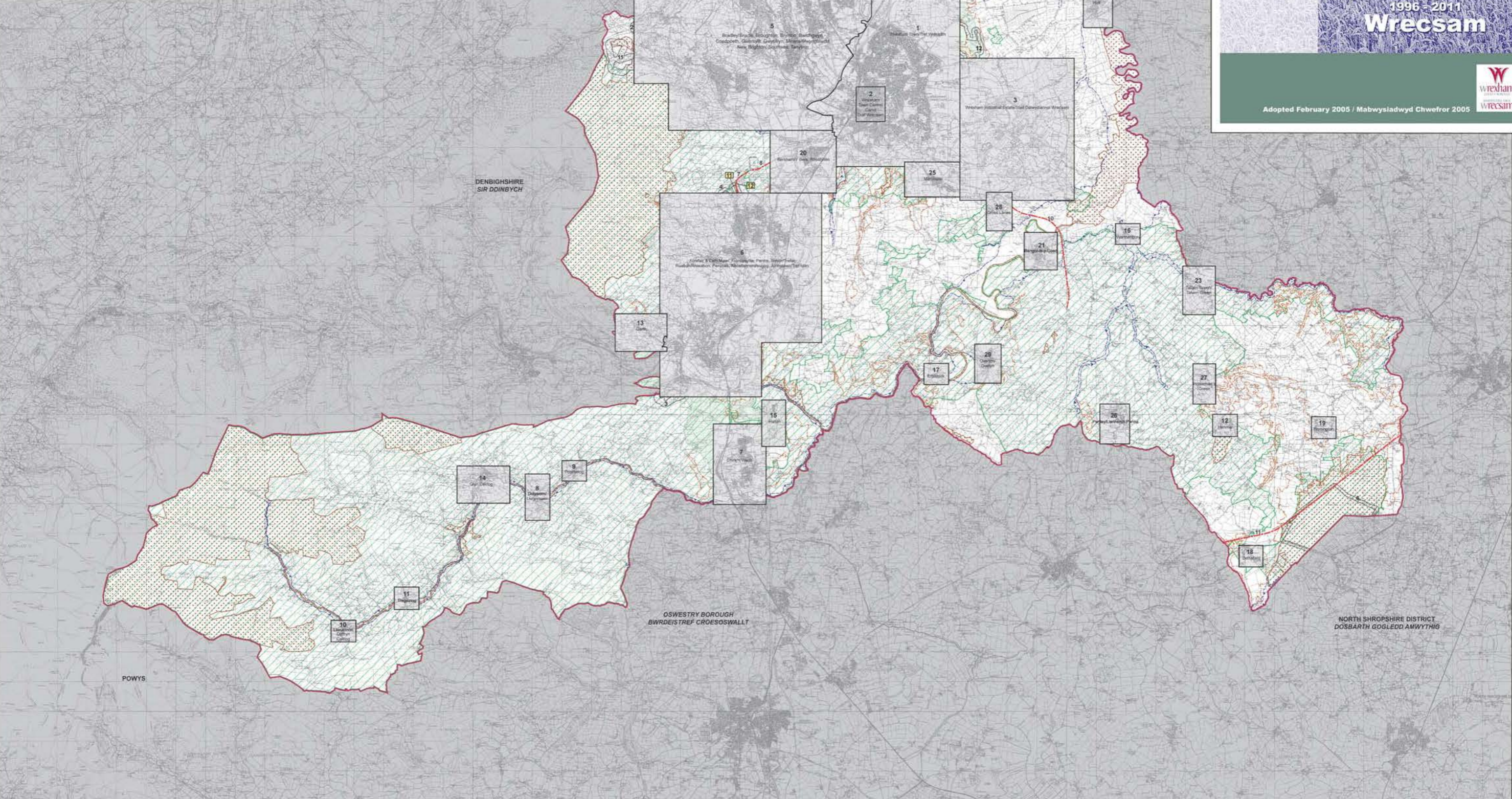
1. Wrexham Town - Tref Wrecsam
2. Wrexham Town Centre - Canol Dref Wrecsam
3. Wrexham Industrial Estate - Stôr Odyddennol Wrecsam
4. Burton, Greiford/Greiford & Marford - Rwydydd y Gwedd & Llaner, Llanllŷ
5. Bradleybridge, Broughton, Brymbo, Bwlchgwyn, Coedpoeth, Gwynnys, Gwynnys, Miners, Mynyddiawd, New Brighton, Southsea, Tanyhon
6. Acreth & Cefn Mawr, Froncysyllte, Penrhos, Treor/Treor, Ruabon/Ruabon, Penycae, Rheilwernchruog & Johnston/Tref Isan
7. Chirk/Y Wern
8. Dolywern/Llanymawr
9. Portladdog
10. Llanamonn Dyffryn Ceirog
11. Tregerning
12. Hammer
13. Gath
14. Glyn Ceirng
15. Halton
16. Worthenbury
17. Ebbw Vale
18. Bettisfield
19. Bronington
20. Berriemont/Berriemont
21. Bangor-is-y-Coed
22. Syddall
23. Tatham Green/Tatham Green
24. Holt
25. Marchwiel
26. Penley/Llanerch Pinnau
27. Horseman's Green
28. Cross Lanes
29. Overton/Cwrtyn

Other Settlement Policies / Polisiau Angheddiad Eraill:
PS2, PS3, PS4, PS5, PS6, PS7, PS8, H12, E4, CLF1, CLF3, CLF5

Other Countryside Policies / Polisiau Cefn Gwlad Eraill:
EC2, EC3, ECA, H3, H4, H5, H6, H7, H8, H9, H10, H11, H12, H13, H14, H15, H16, H17, H18, H19, H20, H21, H22, H23, H24, H25, H26, H27, H28, H29, H30, H31, H32, H33, H34, H35, H36, H37, H38, H39, H40, H41, H42, H43, H44, H45, H46, H47, H48, H49, H50, H51, H52, H53, H54, H55, H56, H57, H58, H59, H60, H61, H62, H63, H64, H65, H66, H67, H68, H69, H70, H71, H72, H73, H74, H75, H76, H77, H78, H79, H80, H81, H82, H83, H84, H85, H86, H87, H88, H89, H90, H91, H92, H93, H94, H95, H96, H97, H98, H99, H100

Other County Borough-Wide Policies / Polisiau Bwrdeistref Siro Eraill:
GDPI, GDPII, ECR, EC11, EC13, EC14, EC15, H4, H5, H11, PS2, PS10, PS11, PS12, CLF4, CLF5, CLF6, CLF7, CLF8, CLF9, CLF10, CLF11, CLF12, CLF13, CLF14, CLF15, CLF16, CLF17, CLF18, CLF19, CLF20, CLF21, CLF22, CLF23, CLF24, CLF25, CLF26, CLF27, CLF28, CLF29, CLF30, CLF31, CLF32, CLF33, CLF34, CLF35, CLF36, CLF37, CLF38, CLF39, CLF40, CLF41, CLF42, CLF43, CLF44, CLF45, CLF46, CLF47, CLF48, CLF49, CLF50, CLF51, CLF52, CLF53, CLF54, CLF55, CLF56, CLF57, CLF58, CLF59, CLF60, CLF61, CLF62, CLF63, CLF64, CLF65, CLF66, CLF67, CLF68, CLF69, CLF70, CLF71, CLF72, CLF73, CLF74, CLF75, CLF76, CLF77, CLF78, CLF79, CLF80, CLF81, CLF82, CLF83, CLF84, CLF85, CLF86, CLF87, CLF88, CLF89, CLF90, CLF91, CLF92, CLF93, CLF94, CLF95, CLF96, CLF97, CLF98, CLF99, CLF100

Scale / Graidd 1:10000



Reproduced from the Ordnance Survey maps with the permission of the Controller of Her Majesty's Stationery Office. © Crown copyright reserved. O.S. Licence No. 10003429 February 2005. Map is copyright © a map by Arding Ordnance and a licensed Ordnance Survey (OS) Map. All rights reserved. OS Licence No. 10003429 February 2005.