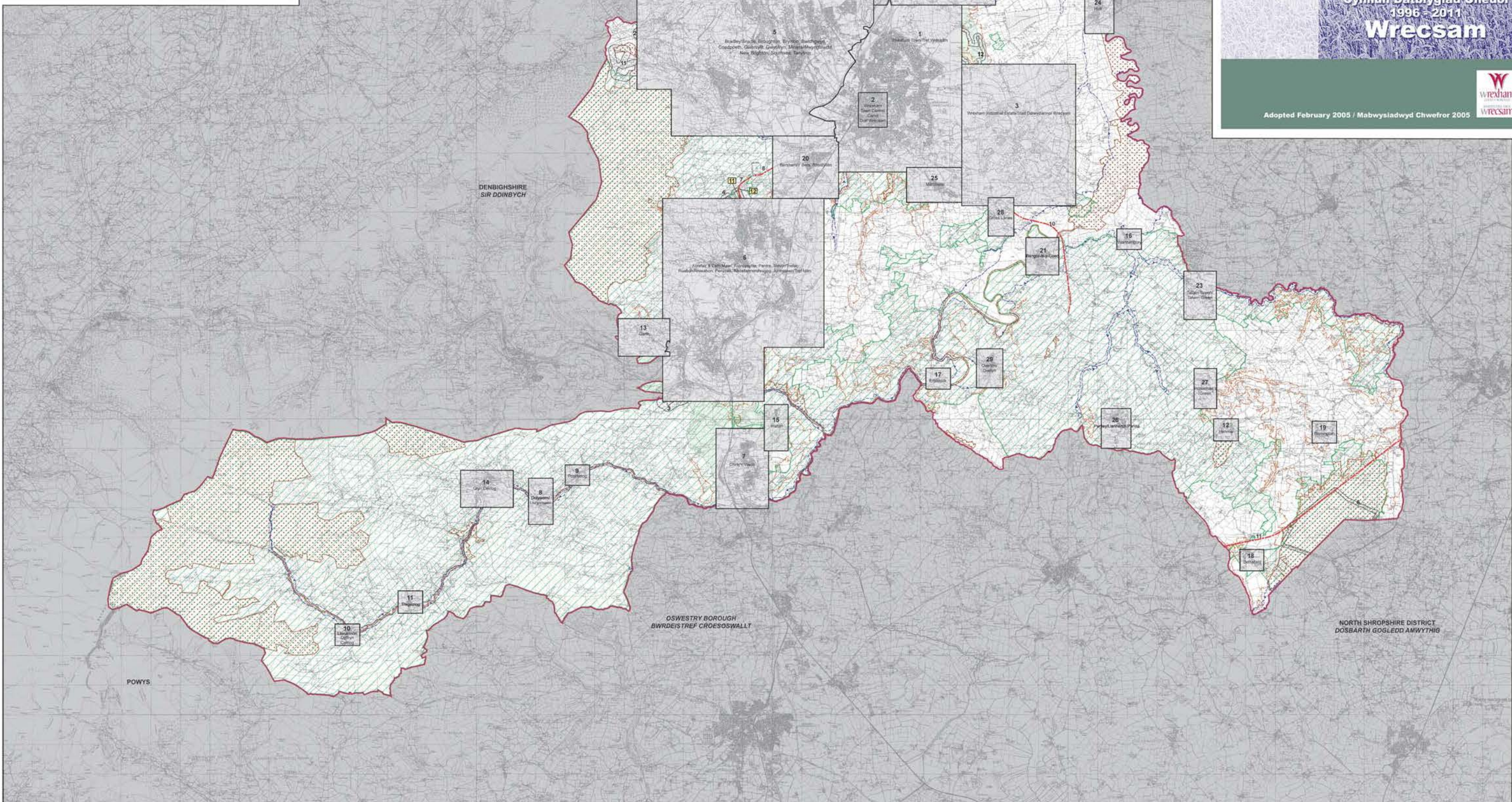


Notation / Nodiadau		List of Insets / Rhestr o Ffynnodoladau	
	County Boundary / Ffin y Sir	1	Wrexham Town - Tref Wrexham
	Inset / Ffynnodol	2	Wrexham Town Centre - Canol Dref Wrexham
	Green Belt / Ffin Gyrdi - EC1	3	Wrexham Industrial Estate - Stref Gwyddonol Wrexham
	Special Landscape Area / Ardul Tŷfan Arboreig - EC6	4	Burton, Greiford/Greiford & Marford - Rhestr y'r Orsedd & Llaner, Llaner, Llaner
	Biodiversity Conservation / Cadwraeth Bioamrywiaeth - EC6	5	Bradleybridge, Broughton, Brymbo, Bwlchgwyn, Coedpoeth, Gwynnys, Gwynnys, Miners, Myingylswydd, New Brighton, Southsea, Tanyhon
	Land Reclamation / Adfer Tŷ - EC18	6	Acrefer & Cefn Mawr, Froncysyllte, Penrhos, Treor/Treor, Ruabon/Ruabon, Penrycae, Rhestr y'r Orsedd & Llaner, Llaner, Llaner
	Development & Flood Risk / Datblygiad a Pherygl LHM - EC12	7	Chirk/Y Wern
	Walking/Cycling Route / Llysofr Cedfod/Bacio - T10	8	Dolywern/Llaner
	Protection of Mineral Resources / Cogaflu Adnoddau Mineral - MW9	9	Portladdog
	Minerals Buffer Zone / Cychlybodd Rhagod Mwyllau - MW11	10	Llanamnon Dyffryn Cefnog
Other Settlement Policies / Pŵllsau Angheddol Eraill:		11	Tingering
PS2, PS3, PS4, PS5, PS6, PS7, PS8, PS12, E4, CLF1, CLF3, CLF5		12	Hanner
Other Countryside Policies / Pŵllsau Cefn Gwlad Eraill:		13	Gath
EC2, EC3, ECA, H3, H4, H5, H6, H7, H8, H9, H10, H11, H12, H13, H14, H15, H16, H17, H18, H19, H20, H21, H22, H23, H24, H25, H26, H27, H28, H29, H30, H31, H32, H33, H34, H35, H36, H37, H38, H39, H40, H41, H42, H43, H44, H45, H46, H47, H48, H49, H50, H51, H52, H53, H54, H55, H56, H57, H58, H59, H60, H61, H62, H63, H64, H65, H66, H67, H68, H69, H70, H71, H72, H73, H74, H75, H76, H77, H78, H79, H80, H81, H82, H83, H84, H85, H86, H87, H88, H89, H90, H91, H92, H93, H94, H95, H96, H97, H98, H99, H100		14	Glyn Ceirng
Other County Borough-Wide Policies / Pŵllsau Bwrdeistref Siro Eraill:		15	Hallon
GDPI, GDPI, ECR, EC11, EC13, EC14, EC15, H4, H5, H11, PS2, PS10, PS11, PS12, CLF4, CLF5, CLF6, CLF7, CLF8, CLF9, CLF10, CLF11, CLF12, CLF13, CLF14, CLF15, CLF16, CLF17, CLF18, CLF19, CLF20, CLF21, CLF22, CLF23, CLF24, CLF25, CLF26, CLF27, CLF28, CLF29, CLF30, CLF31, CLF32, CLF33, CLF34, CLF35, CLF36, CLF37, CLF38, CLF39, CLF40, CLF41, CLF42, CLF43, CLF44, CLF45, CLF46, CLF47, CLF48, CLF49, CLF50, CLF51, CLF52, CLF53, CLF54, CLF55, CLF56, CLF57, CLF58, CLF59, CLF60, CLF61, CLF62, CLF63, CLF64, CLF65, CLF66, CLF67, CLF68, CLF69, CLF70, CLF71, CLF72, CLF73, CLF74, CLF75, CLF76, CLF77, CLF78, CLF79, CLF80, CLF81, CLF82, CLF83, CLF84, CLF85, CLF86, CLF87, CLF88, CLF89, CLF90, CLF91, CLF92, CLF93, CLF94, CLF95, CLF96, CLF97, CLF98, CLF99, CLF100		16	Wortherbury
Scale / Graidd 1:10000		17	Elisbuck
		18	Bethfield
		19	Bronington
		20	Bertham/Y Bers & Rhosyllen
		21	Bangor-is-y-Coed
		22	Sydall
		23	Tallam Green/Tallam Green
		24	Holl
		25	Marchwiel
		26	Penley/Llanerch Pnina
		27	Horseman's Green
		28	Cross Lanes
		29	Overton/Cwrtyn

# MAP CYNIGION

This document is available in Welsh



proposals map / map cynigion

# map 1

PROPOSALS MAP / MAP CYNIGION

**Wrexham**  
Unitary Development Plan  
1996 - 2011

Cynllun Datblygiad Unedol  
1996 - 2011

**Wrecsam**

Adopted February 2005 / Mabwysiadwyd Chwefror 2005

Reproduced from the Ordnance Survey maps with the permission of the Controller of Her Majesty's Stationery Office. © Crown copyright reserved. O.S. Licence No. 10003429 February 2005. Made in Wrexham by a firm of Printing and Designers at the Wrexham Industrial Estate, Wrexham. Printed in Great Britain by the Wrexham Industrial Estate, Wrexham.