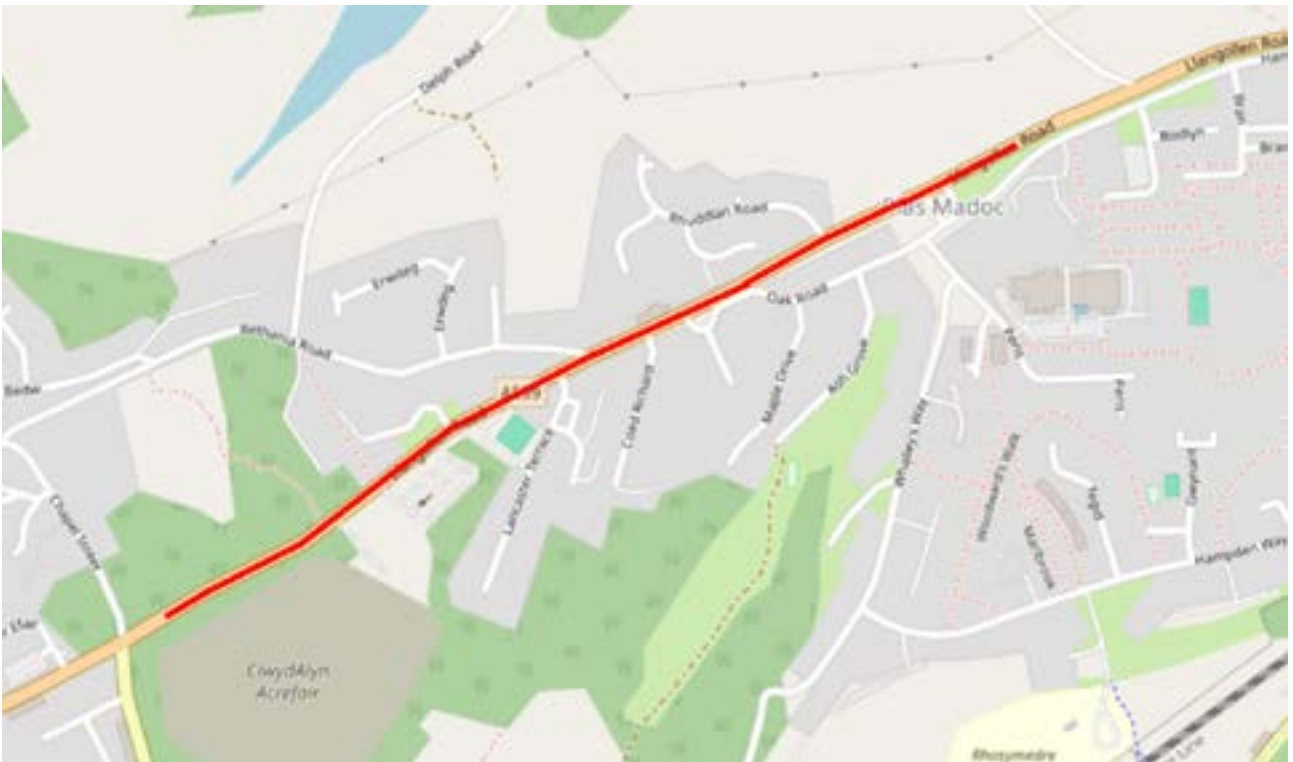


The County Borough of Wrexham (Welsh Government 30mph Scheme, Various Locations) (30 mph) Speed Limit) Order 2025

A539 Llangollen Road, Acrefair



Map showing the proposed section to revert to 30mph

The highlighted section is proposed to revert to 30mph.

From a point 93m east of its junction with Hampden Way, to a point 12m east of its junction with Chapel Street, a distance of 945m.